

# SyncVision®

Precision Guidance



**SYNCVISION®**  
KNOW WHERE YOU ARE

*Streamlines Lesion Assessment*  
*Simplifies Vessel Sizing*  
*Enables Precise Therapy Delivery*

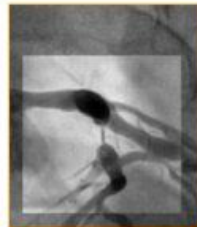
**VOLCANO**  
PRECISION GUIDED THERAPY

# SyncVision®

## Precision Guidance



IVUS Co-Registration: Localization



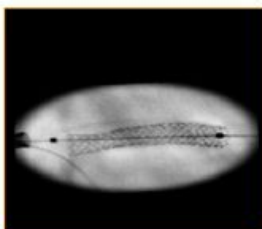
Vessel Enhancement



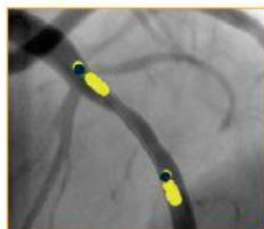
IVUS Co-Registration: Measurement



On-line Automated Quantitative Calculation



Device Enhancement



Device Motion Indication

### Streamlines Lesion Assessment

- Localization of IVUS images with angio co-registration is designed to help reduce the risk of geographic miss, which study data suggests may occur in 66.5% of PCIs.<sup>1</sup>
- Angio+™ Vessel Enhancement tool provides clarity visualizing vessels which may include tortuous or overlapping vessels and highly stenosed lesions, potentially reducing the number of required views during diagnosis or therapy.

### Simplifies Vessel Sizing

- IVUS co-registration provides easy length measurement with manual IVUS pullback and area / diameter measurements for accurate stent sizing.
- Angio+ Quantitative Coronary Analysis automatically calculates lumen dimensions and stenosis in real time.

### Enables Precise Therapy Delivery

- Angio+ real-time Image Stabilization and Device Enhancement enable precise therapy delivery
- With IVUS, you can confirm "healthy-to-healthy" landing zones.<sup>2</sup>

1. Costa et al. Impact of Stent Deployment Procedural Factors on Long-term Effectiveness and Safety of Sirolimus-Eluting Stents (Final results of the Multicenter Prospective STLLR Trial), Am J Cardiol 2008 Jun 15; 101(12):1704-11
2. Wiltenbichler B et al. Relationship Between Intravascular Ultrasound Guidance and Clinical Outcomes After Drug-Eluting Stents: The ADAPT-DES Study. Circulation 2014 Jan; 129.4:463-470

## Specifications

### POWER REQUIREMENTS

System Input	100V-120V, 50/60Hz; 220-240V, 50/60Hz; 600 VA
Workstation	100-240V, 50/60Hz; 250 VA
Monitor	100-240V, 50/60Hz; 93 VA

### DIMENSIONS

Workstation	H: 16.5", 39.6 cm, W: 6.75", 16.2 cm, D: 21.25", 51 cm
Bedside Joystick	H: 1.5", 3.7 cm, W: 4.2", 10.7 cm, D: 3", 7.6 cm
Monitor	H: 15-19", 41-56 cm, W: 15.8", 40.2 cm, D: 10", 24.7cm

### INPUTS

Angio System Video Output	Analog or Digital
IVUS System	Volcano s5™/CORE® Systems, SW Version 3.2.2 and Above
IVUS Catheter	Eagle Eye® Platinum Catheters
ECG Signal	Contact your local Volcano representative for compatibility

### ORDERING INFORMATION

SyncVision System	Sync002
-------------------	---------



PRECISION GUIDED THERAPY

**Volcano Corporation**  
Corporate Headquarters  
3721 Valley Centre Drive, Suite 500  
San Diego, CA 92130 USA  
Phone: 800-228-4728  
Fax: 858-720-0325

**Volcano Europe BVBA/SPRL**  
Europe Headquarters  
Excelsiorlaan 41  
B-1930 Zaventem Belgium  
Phone: +32 2 679 1076  
Fax: +32 2 679 1079

**Volcano Japan Co., Ltd**  
Japan Headquarters  
Mita NN Bldg. 24F  
4-1-23, Shiba, Minato-ku, Tokyo  
108-0014 Japan  
Phone: +81 3 6414 8700  
Fax: +81 3 6414 8701

For further information about Volcano and its products, please visit [www.volcanocorp.com](http://www.volcanocorp.com). SyncVision, CORE, Eagle Eye, Volcano and the Volcano logo are registered trademarks of Volcano Corporation. Angio+ and s5 are trademarks of Volcano Corporation.

600-0500.22/003